



### HAIR TOP PIECES

100% HUMAN  
UNDETECTABLE  
VOLUMIZING  
COMFORTABLE CLIPS  
NATURAL HAIR COVERAGE  
LIGHTWEIGHT  
SECOND SKIN  
HAIR THERAPY SYSTEM

Please ask your stylist  
for more information on our Ambience Collection!

Follow us on



[www.facebook.com/haircoutureus](https://www.facebook.com/haircoutureus)



[@haircoutureus](https://www.instagram.com/haircoutureus)



HAIR COUTURE  
Phone: 562.483.7376  
Fax: 562.483.7076

[www.haircouture.com](https://www.haircouture.com)

Comments or suggestions?  
[contactus@haircouture.com](mailto:contactus@haircouture.com)

# Ambience<sup>TM</sup> Collection Lookbook







*Ambience™ by Hair Couture™*  
It's Our Secret....

The *Ambience™* collection has been first inspired by women with partial hair loss and those who suffer from balding areas, and of course, as well as those who just needs the extra volume. Our *Ambience™* collection is a delicate top piece, hand-tied on a “transparent” and “breathable” base. Our hand-tied craftsmanship allows a multi-directional parting, so it can discreetly blend right into your own. Each piece is meticulously woven by expert wig makers providing top rated results for effortless coverage. Backed by Hair Couture’s™ 100% Human Remy hair, the *Ambience™* Top Piece is GUARANTEED to become a part of your life!

### AMBIENCE KEY POINTS

1. The Ambience Collection is NOT a wig. It is a “Top Piece” that covers balding or very thinning areas.
2. Majority of the hair pieces in the market use polyester or synthetic fiber base, causing no air flow to the scalp. Which leads to sweat & oil build-up in the follicles causing more or unwanted hair loss. Our Ambience base is made of “breathable mesh” keeping airflow circulation to the scalp & roots.
3. The “breathable mesh base” is “transparent” like a second skin. If you put the base against your skin, your own skin color/tone sheers through, making it look 100% Natural! \*Watch our “breathable mesh base” video on: [www.haircouture.com](http://www.haircouture.com), Instagram: @haircoutureus or [www.facebook.com/HairCoutureUS](http://www.facebook.com/HairCoutureUS)
4. Our “Top Piece” is crafted so that you can make the hair parting on the left, middle or right side by simply using a blow dryer or flat iron. Each piece of hair was skillfully hand-tied so it can part in a multi-directional parting. Because not all hair partings are the same, we created a “Top Piece” so everyone and anyone can enjoy it!
5. Each hair piece is made with a “Natural Fall”. This means we did not trim the ends of the hair. So you can wear it naturally or get it customized with your personal haircut.
6. Made with 100% Remy Human Hair, you can color the “Top Piece” to match your hair color if we do not carry your specific color.
7. Comes in an attractive box case to safely store the hair piece.

# Contents



3  
Natural Top  
Small Natural



4  
Natural Top  
Medium



5  
Natural  
Top Large



6  
Natural  
Top Full



7  
Bumper



8  
Secret Crown



9  
Natural  
T-Topper



10  
U-Filler



11  
Feather Bang



12  
Blunt Bang



13  
Pop'In Top  
Easy Bang



14  
Color Chart



# Natural Top Small

## Hand-tied Small Rectangle Mono Base

### Specifications:

**100% Human Hair W/4CLIPS**  
**BASE SIZE:** 3"× 5"  
**HAIR:** 10" / Bangs 5"  
**WEIGHT:** 29g  
**PATTERN:** Multi-directional

Free style, fine & flowy rectangle base with medium density double monofilament side trim for perfect fit and fullness. Unique versatile use.

*\*Invisible, breathable sheer base like second skin.*

*\*Spray water lightly on parting area and blow dry, flat iron or steam to the direction you want the parting to be.*

*\*For great results: Stylist should trim/cut the hair piece to create an original custom fit.*

### Before



Top View

### After



Top View



Angle View



Frontal View

### Product Details



### Product Details



### Specifications:

**100% Human Hair W/3CLIPS**  
**BASE SIZE:** 5"× 5"  
**HAIR:** 11"  
**WEIGHT:** 35g  
**PATTERN:** Multi-directional Parting

Free-style medium density, fine flowy mono top hair piece. Most popular monofilament unit for that extra layer of lighter volume or to cover small to medium balding/receding areas. Parting is hand-tied to fall forward with a side swept effect.

*\*Invisible, breathable sheer base like second skin.*

*\*Spray water lightly on parting area and blow dry, flat iron or steam to the direction you want the parting to be.*

*\*For great results: Stylist should trim/cut the hair piece to create an original custom fit.*

### Before



Frontal View

### After



Frontal View



Top View



Angle View

# Natural Top Medium

## Hand-tied Med Round Mono Base



# Natural Top Large

## Hand-Tied Large Blunt Bang Mono Top

### Specifications:

**100% Human Hair W/4CLIPS**  
**BASE SIZE:** 5.5" X5.5"  
**MONO SIZE:** 2.75"X 3"  
**HAIR:** 19"  
**WEIGHT:** 45g  
**PATTERN:** Multi-directional Parting

This is a pre-styled blunt bang, ready to wear monofilament front base. Medium density human hair. Perfect solution for covering receding or balding frontal areas.

*\*For great results:  
 Stylist should trim/cut the hair piece to create an original custom fit.  
 \*Spray water lightly on parting area and blow dry, flat iron or steam to the direction you want the parting to be.*

### Product Details



### Before



Angle View

### After



Angle View



Top View



Frontal View

# Natural Top Full

## Hand-Tied Full Cover Mono Top

### Specifications:

**100% Human Hair W/4CLIPS**  
**BASE SIZE:** 6" X6.75"  
**MONO SIZE:** 3.75" X 3.75"  
**HAIR:** 14"  
**WEIGHT:** 60g  
**PATTERN:** Multi-directional

Most popular piece w/scalp front ½" polyurethane edge and fine translucent monofilament front. The hair is knotted in a multi-directional pattern for natural parting. Great integration cover for all types of balding areas.

*\*Invisible, breathable sheer base like second skin.  
 \*Spray water lightly on parting area and blow dry, flat iron or steam to the direction you want the parting to be.  
 \*For great results: Stylist should trim/cut the hair piece to create an original custom fit.*

### Before



Top View

### After



Top View



Angle View



Frontal View

### Product Details





— — — — —  
**Natural Bumper**  
*Hand-Tied Undetectable Beehive Base*  
— — — — —

*Specifications:*

**100% Human Hair W/2CLIPS**  
**MONO BASE SIZE:** 3.5"X4"X4"  
**HAIR:** 20"  
**WEIGHT:** 40g

The perfect hairpiece for that extra volume at the back crown! The Bumper is dense enough to create the volume you need but light enough to be nearly seamless. Simply wear this piece under a generous section of your hair, and lay your hair over the Bumper. If needed, lightly tease your hair for better coverage.

*\*For great results:  
Stylist should trim/cut the hair piece to create an original custom fit.*

*Product Details*



*Before*



*Angle View*

*After*



*Angle View*

*Side View*



*Side View*

*Frontal View*



*Frontal View*

*Before*



*Frontal View*

*After*



*Frontal View*

*Top View*



*Top View*

*Side View*



*Side View*

*Product Details*



— — — — —  
**Natural T-Topper**  
*Hand-Tied Undetectable Beehive Base*  
— — — — —

*Specifications:*

**100% Human Hair W/4CLIPS**  
**BASE SIZE:** 1.5" X4.75"X 4.75"  
**HAIR:** 12"  
**WEIGHT:** 31g

Crown Tip is "V" shaped to create a natural blend with the hairline. Perfect solution for clients with visible thinning areas near or through their natural partings. Use for multi-purpose wear: Thinning, cover-up roots, volume, or cover receding hairlines.

*\*Invisible, breathable sheer base like second skin.  
\*Spray water lightly on parting area and blow dry, flat iron or steam to the direction you want the parting to be.  
\*For great results:  
Stylist should trim/cut the hair piece to create an original custom fit.*



**Before**



Frontal View

**After**



Frontal View

**Product Details**



**Specifications:**

**100% Human Hair W/4CLIPS**  
**BASE SIZE:** 1"X3"X2"X5"  
**HAIR:** 16"  
**WEIGHT:** 50g

**U-Filler**  
*Hand-Tied Undetectable Filler*

This unique "U" piece is designed to hide the flat/thinning areas around the side temples and back crown areas. The solution for fullness all around the head while integrating your own natural hair parting and fringe. This unit is hidden under your own hair from the crown and is simply an undetectable integration.

*\*For great results: Stylist should trim/cut the hair piece to create an original custom fit.*

**Before**



Angle View

**After**



Angle View

**Product Details**



**Specifications:**

**100% Human Hair W/2CLIPS**  
**BASE SIZE:** 3.5" X2.5"  
**HAIR:** 5"- 7.5"  
**WEIGHT:** 15g  
**PATTERN:** Multi-directional

**Secret Crown**  
*Hand-Tied Multi-Top*

Use for multi purpose wear. Side swept Bang, thinning temples, thinning crown, flat sides, cover up roots and give more volume at crown.

*\*Invisible, breathable sheer base like second skin.*

*\*Spray water lightly on parting area and blow dry, flat iron or steam to the direction you want the parting to be.*



*\*For great results: Stylist should trim/cut the hair piece to create an original custom fit.*

**Before**



Angle View

**After**



Angle View

**Product Details**



**Before**



Angle View

**After**



Angle View

**Product Details**



**Before**



Angle View

**After**



Angle View

**Product Details**



**Before**



Angle View

**After**



Angle View

**Product Details**



**Before**



Angle View

**After**



Angle View

**Product Details**



**Before**



Angle View

**After**



Angle View

**Product Details**



**Before**



Angle View

**After**



Angle View

**Product Details**



**Before**



Angle View

**After**



Angle View

**Product Details**



**Before**



Angle View

**After**



Angle View

**Product Details**



**Before**



Angle View

**After**



Angle View

**Product Details**



**Before**



Angle View

**After**



Angle View

**Product Details**



**Before**



Angle View

**After**



Angle View

**Product Details**



**Before**



Angle View

**After**



Angle View

**Product Details**



**Before**



Angle View

**After**



Angle View

**Product Details**



**Before**



Angle View

**After**



Angle View

**Product Details**



**Before**



Angle View

**After**



Angle View

**Product Details**



**Before**



Angle View

**After**



Angle View

**Product Details**



**Before**



Angle View

**After**



Angle View

**Product Details**



**Before**



Angle View

**After**



Angle View

**Product Details**



**Before**



Angle View

**After**



Angle View

**Product Details**



**Before**



Angle View

**After**



Angle View



Product Details



Before



Top View



Angle View

After



Top View



Frontal View

Feather Bang

Hand-Tied Top “V” Tip Bang

Specifications:

100% Human Hair W/3CLIPS  
BASE SIZE: 2.5"x 4.5"  
HAIR: Feather 11" Bang 7"  
WEIGHT: 14g

Easy 3 snap clip in doll face bang. The crown tip is “V” shaped to create a natural blend into the crown parting. Completely invisible and undetectable. Great to cover large foreheads or receding frontal/temples areas, or even a quick style transition!

\*For great results:  
Stylist should trim/cut the hair piece to create an original custom fit.

Blunt Bang  
Hand-Tied Front “V” Shaped Bang

Specifications:

100% Human Remy Hair w/3 SNAP CLIPS  
BASE SIZE: 4"x .75"  
EACH WING: 2.75"  
HAIR LENGTH: 7"  
WEIGHT: 14g

Easy 3 snap clip in bang. The “V”-shape snaps discretely into the actual hair to create a naturally blended connection covering thinning or receding frontal/temples areas.

\*For great results:  
Stylist should trim/cut the hair piece to create an original custom fit.

Before



Top-view



After



Angle-view



Product Details





# Easy Bang

## Hand-Tied Side Mono Bang

100% Human Hair W/3CLIPS  
 BASE SIZE: 3.5" X2.5"  
 HAIR: 8"  
 WEIGHT: 11g  
 PATTERN: Multi-directional



Most Popular Hair Piece for All Ages!  
 Use for side bangs, highlights, filler, up dos, volume or fullness. Base is hand-tied with "uplifted roots" for a seamless invisible integration. Multiple ways to use.



# Pop'In Top

## Hand-Tied Multi-Clip In

100% Human Hair W/2CLIPS  
 BASE SIZE: 1.5" x 1.75"  
 HAIR: 5"- 11"  
 WEIGHT: 11g



Use for multi purpose; give volume to any areas of the head. Use for side bangs, up-dos, highlights, quick portion filling in thinning areas and flattened areas with no volume. Don't need volume all around? Then try our Pop'in Top pieces for a quick fill on the spot.



# Color Chart

PT = COLOR AVAILABLE IN POP'IN TOP ONLY  
 PT/EB = COLOR AVAILABLE IN POP'IN TOP AND EASY BANG ONLY  
 \* = NOT AVAILABLE IN POP'IN TOP

## Dark



## Light and Mixed



## Elegant Storage Case

Each Top Piece comes in an elegant storage case for great presentation.  
 \*Included with purchase

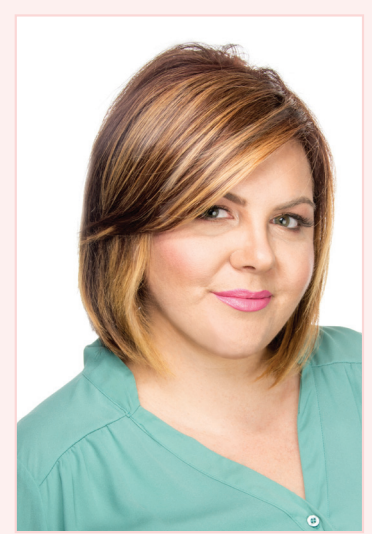
## Before



Frontal View

## After

### Easy Bang



Frontal View

### Pop'In Top



Frontal View

\*For great results:  
 Stylist should trim/cut the hair piece to create an original custom fit.